



For the ultimate quick and easy installation solution, use our pre-configured, insulated panels that include all the system components already integrated. The panels are supplied in sized panels which are simply fitted and connected together on-site.

FEATURES AND BENEFITS

- Pre-configured solution
- Can be used with both traditional or composite (I beam) joists
- Maximises heat efficiency
- System can be used with low temperature heat sources for optimum efficiency

| PRODUCT CODE | LENGTH x WIDTH (mm) | PACK QUANTITY |
|--------------|---------------------|---------------|
| MHP33013 | 330mm x 1300mm | 5 |
| MHP38013 | 380mm x 1300mm | 5 |
| MHP33020 | 330mm x 2000mm | 5 |
| MHP49013 | 490mm x 1300mm | 5 |
| MHP49020 | 490mm x 2000mm | 5 |

INSTALLATION

Step 1 - Select panel width

The spacing of joists and the available gap will determine which MHP panel width will be most suitable for each project. Select the MHP width nearest to the gap width, ensuring that this does not encroach on the space for other services.

The 490mm width panel will normally be fitted in the wider joist spacing used by composite joists and 'I' beams.

Step 2 - Select panel length

The span of the joists in each room will determine which MHP panel length should be selected.

The span is defined as the free space from wall to wall that needs to remain uninterrupted by trimmers or other services. Ideally, install MHP panels prior to other services whenever possible.

| HEAT OUTPUT | | | | | | |
|---|------------------|------------------|------|------|------|------|
| MAXIMUM FLOOR AREA FOR FLOW AND RETURN 20m ² | | | | | | |
| ROOM AT 20°C | Floor temp. (°C) | 40 | 45 | 50 | 55 | 60 |
| | | Floor temp. (°C) | 25.0 | 25.8 | 26.6 | 28.9 |
| HEAT OUTPUT PER PANEL | MHP 49020 (W) | 63 | 75 | 86 | 120 | 147 |
| | MHP 49013 (W) | 42 | 50 | 58 | 80 | 99 |
| | MHP 38020 (W) | 49 | 58 | 67 | 93 | 114 |
| | MHP 38013 (W) | 33 | 39 | 45 | 62 | 77 |
| | MHP 49020 (W) | 42 | 50 | 58 | 80 | 98 |
| | MHP 38013 (W) | 29 | 34 | 39 | 53 | 66 |

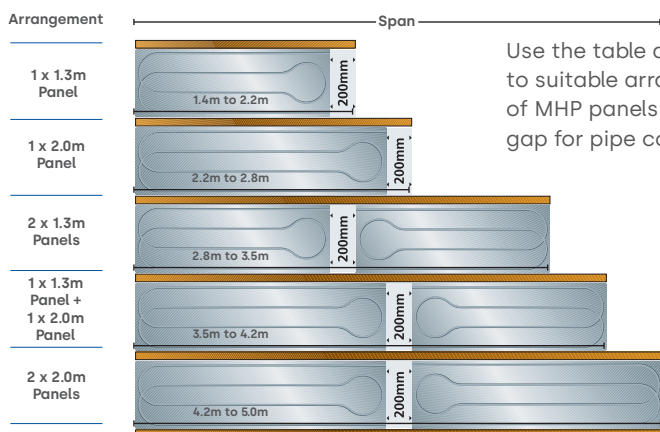
Approximate coverage required:

- For 70W/m² room = 80% coverage
- Connect up to 3 panels in series
- Maximum coverage per circuit 20m²

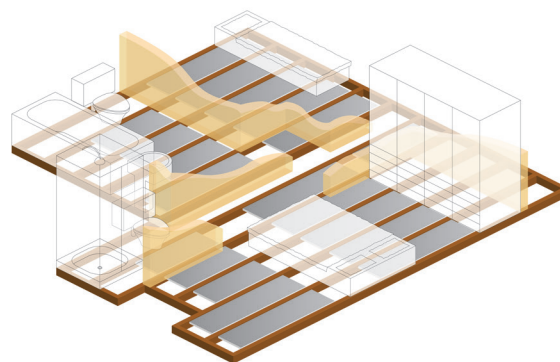
Step 3 - Planning your room arrangement

Calculating the amount of floor area to be covered by MHP will be based on the required heat output and will take into account areas of the floor that

do not require heating, such as under built-in wardrobes, baths and shower cubicles. The diagram below illustrates a typical layout that might be considered.



Use the table as a quick guide to suitable arrangements of MHP panels leaving a 200mm gap for pipe connections.



FIND OUT MORE AT: ufcm.co.uk